

Terminal Tractor Service Bulletin



Kalmar is part of Cargotec Corporation

Subject: Air Conditioner Thermostat Relocation			
Product: Terminal Tractor	Bulletin # SB08TI0009	Date: 1-Jul-2009	Pages: Page 1 of 7
To: All Kalmar Sales Companies		From: Medium Terminal Tractor Product Support	

Units Affected: Kalmar Ottawa 4 x 2 and 6 x 4 units manufactured between December 2005 and December 2008, with A/C units manufactured by MCC (see photo for identification).

MCC Identification



Possible Situation: In select geographic areas where humidity levels are high and prolonged, A/C evaporators may freeze due to the humidity and thermostat location. If the evaporator is not freezing, disregard this bulletin, as no modification is necessary.

Solution: For units that are experiencing freezing of the evaporator, relocate the thermostat to the described location in the evaporator, and insulate the expansion valve and exposed copper tubing.

Components Required for Modification: To perform the modification dealers will need kit part number 90033201.

Note: To determine if your evaporator is freezing, remove the access panel from the front of the cab, remove the access panel from the A/C unit and look to see if ice has formed on the evaporator. This must be done while the unit is experiencing the problem of not cooling.

Terminal Tractor Service Bulletin



Kalmar is part of Cargotec Corporation

Subject: Air Conditioner Thermostat Relocation			
Product: Terminal Tractor	Bulletin # SB08TI0009	Date: 1-Jul-2009	Pages: Page 2 of 7
To: All Kalmar Sales Companies		From: Medium Terminal Tractor Product Support	

Thermostat Probe Re-location Procedure

Important: Work will take place on fully charged system with R134a. Follow all safety requirements prescribed by facility where work will take place with regard to handling/working with refrigerants. Before work can begin, ensure the engine is off, the park brake is set, and the wheels are chocked to prevent injury.

Take the following steps to relocate the thermostat probe:

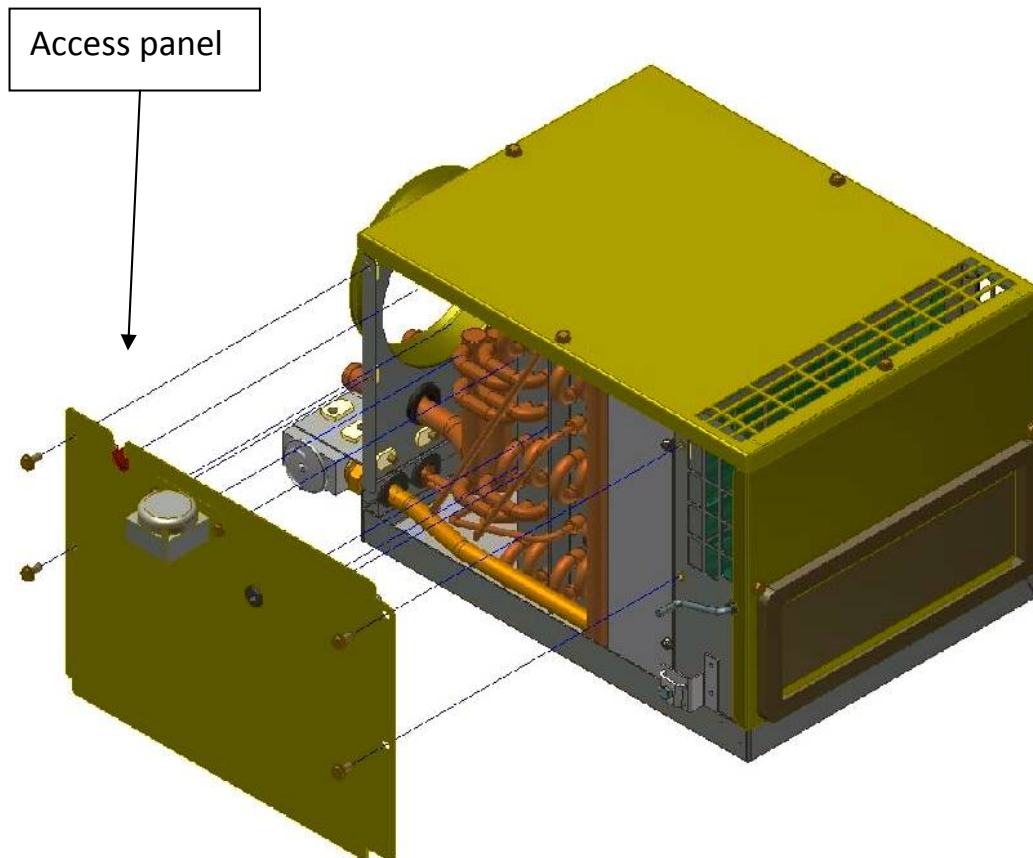
1. Ensure that system cannot be started unintentionally, the park brake is set, and the wheels are chocked. (Refer to Kalmar Operator's Manual).
2. Remove external access panel from the front of the cab to access the HVAC unit.
3. Remove and retain the hardware that secures the A/C unit side access cover w/thermostat and remove the access panel.

Terminal Tractor Service Bulletin



Kalmar is part of Cargotec Corporation

Subject: Air Conditioner Thermostat Relocation			
Product: Terminal Tractor	Bulletin # SB08TI0009	Date: 1-Jul-2009	Pages: Page 3 of 7
To: All Kalmar Sales Companies		From: Medium Terminal Tractor Product Support	



Kalmar A/C unit assy. for all LHD 4 x 2 and 6 x 4 trucks.

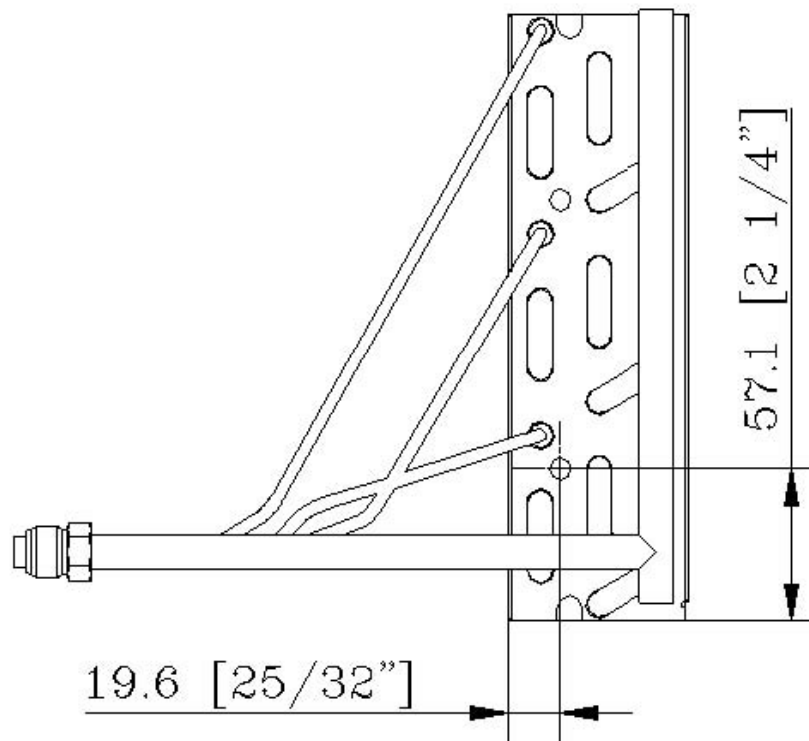
Terminal Tractor Service Bulletin



Kalmar is part of Cargotec Corporation

Subject: Air Conditioner Thermostat Relocation			
Product: Terminal Tractor	Bulletin # SB08TI0009	Date: 1-Jul-2009	Pages: Page 4 of 7
To: All Kalmar Sales Companies		From: Medium Terminal Tractor Product Support	

4. Drill a hole in the evaporator coil endplate as per illustrations below – drill pilot hole DIA .188 – 2.5” deep and follow with DIA. 8mm - .625” deep. Be careful to avoid the coils while drilling as this will damage the evaporator, and could cause personal injury.



Evaporator Coil used in All Kalmar LHD 4 x 2 and 6 x 4 trucks.

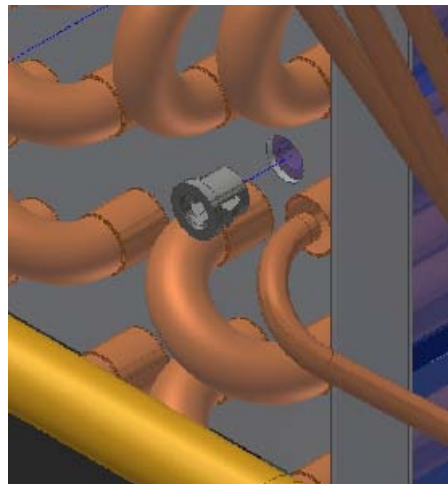
Terminal Tractor Service Bulletin



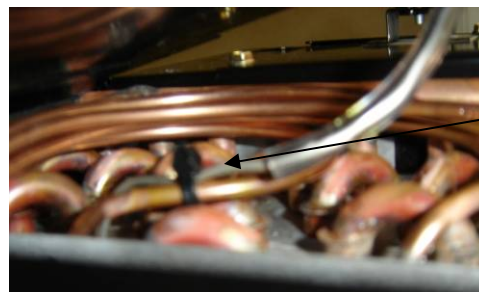
Kalmar is part of Cargotec Corporation

Subject: Air Conditioner Thermostat Relocation			
Product: Terminal Tractor	Bulletin # SB08TI0009	Date: 1-Jul-2009	Pages: Page 5 of 7
To: All Kalmar Sales Companies		From: Medium Terminal Tractor Product Support	

5. Clean and remove all burrs.
6. Insert supplied bushing.



Uncoil thermostat probe (the thermostat is located on the access cover) to desired length and insert into new hole to a depth of 2.5" (do not remove the thermostat from access cover). Use supplied tie-wrap to secure the thermostat probe to a return bend on the coil to ensure proper mounting and location of the probe.



Tie wrap thermostat to return bend on coil.

Terminal Tractor Service Bulletin



Kalmar is part of Cargotec Corporation

Subject: Air Conditioner Thermostat Relocation			
Product: Terminal Tractor	Bulletin # SB08TI0009	Date: 1-Jul-2009	Pages: Page 6 of 7
To: All Kalmar Sales Companies		From: Medium Terminal Tractor Product Support	

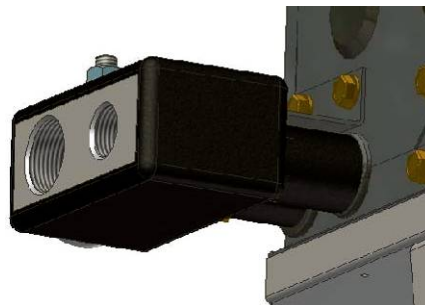
7. Install A/C unit access cover using retained hardware.
8. Tie wrap coiled probe outside the HVAC unit to prevent any damage.



Tie wrap coiled probe.

Expansion Valve and External Tubing Insulating Procedure

9. Use insulation tape supplied in the kit to cover the expansion valve and exposed copper tubing. Before applying; ensure that the surface is free of grease and moisture.



10. Install external access panel removed in step #2.

Terminal Tractor Service Bulletin



Kalmar is part of Cargotec Corporation

Subject: Air Conditioner Thermostat Relocation			
Product: Terminal Tractor	Bulletin # SB08TI0009	Date: 1-Jul-2009	Pages: Page 7 of 7
To: All Kalmar Sales Companies		From: Medium Terminal Tractor Product Support	

11. Start vehicle, check to ensure A/C system is functioning properly.

Warranty: If a customer identifies any units with evaporators that freeze, an authorized Kalmar dealer must verify the condition for it to be considered warrantable. Kalmar will supply the kit and pay .5 hours labor to perform the modification. Standard warranty conditions apply with the exception of unit hours and age (providing the units were produced between December 2005, and December 2008). NOTE: To be considered warrantable, claims must be submitted no later than December 31, 2009.